



# Adani Renewables Australia



## Adani Renewables Australia is striving to be a leading supplier of renewable energy in Australia.

Adani Renewables Australia's vision is to generate renewable energy as part of an energy mix that is reliable, secure and affordable, for all customers with a particular focus on industry, as we transition to generate low emissions.

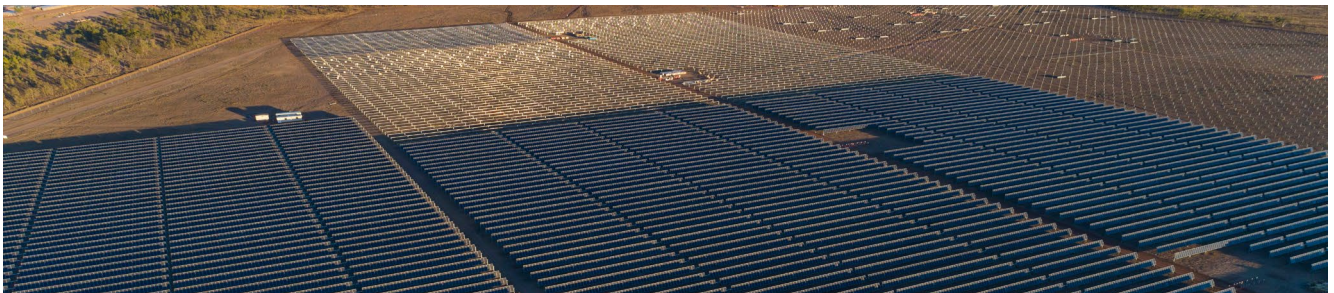
Putting words into action, the business currently has 300MW of solar power projects under development: Rugby Run Solar Farm, located near Moranbah in Queensland, and a second solar project 10km from Whyalla in South Australia.

### Rugby Run Solar Project

- The Rugby Run Project located near Moranbah in Queensland is under construction and with commissioning from December 2018.
- Rugby Run Solar Farm will supply 65MW of renewable power in phase 1, with the capacity to expand up to 170MW.
- Adani has sold 80% of the energy generated through a power purchase agreement. The balance 20% will be sold on the spot market.
- More than 247,000 panels have been installed, which will generate 185,000MWh of power each year from stage one.

### Whyalla Solar Project

- The Whyalla Solar Project is located approximately 10km from Whyalla, in South Australia, at a vacant site more than 300 hectares in size.
- Development approval was granted in September 2017, with pre-construction approval granted in August 2018.
- Adani Renewables Australia is currently in commercial negotiations for power purchase agreements.
- Whyalla Solar Farm will deliver up to 140MW of renewable power and generate up to 300,000MWh of power each year.





## Fast Facts Rugby Run Solar

- 669 hectares in size.
- Will generate 185,000MWh of power each year which is about how much energy it takes to power 23,000 homes each year.
- More than 247,000 solar panels.
- More than 175 jobs at peak construction.
- Adani has sold 80% of the energy generated through a power purchase agreement. The balance 20% will be sold on the spot market.
- 65MW in stage 1 with the ability to expand to 170MW.

## Fast Facts Whyalla Solar

- More than 390 hectares in size.
- More than 470,000 solar panels.
- Will generate up to 300,000MWh of power each year, which is about how much energy it takes to power 60,000 homes each year.
- More than 200 jobs at peak construction.

## Adani Australia is an energy and infrastructure company, dedicated to delivering energy solutions for an advancing world.

By providing energy solutions here in Australia and the Asia Pacific region from renewable and thermal energy, we will create jobs and help fund major infrastructure upgrades to hospitals, schools and roads by contributing billions of dollars in taxes and royalties.

Welcome to the age of sustainable global energy. For Adani Australia, it all starts in regional Queensland.

