



Carmichael Mine Project Black-throated Finch Management Plan

About the Black-throated Finch

The Black-throated Finch (the finch) is a small bird known for the distinctive black mark beneath its beak. The finch is found south of Townsville and in the desert uplands near Clermont and Moranbah through the Isaac region.

The finch has been found near the Carmichael Mine lease. In order to protect the finches and ensure the species continues to thrive, Adani Mining has developed a 20 year management plan.

Adani Mining was required to develop the plan as part of the environmental approval conditions for the Carmichael Mine.



The Black-throated Finch

Fast facts

The Management Plan meets the requirements of the environmental approvals for the mine

1. A management plan has been developed by ecological experts to protect the finches.
2. A conservation area more than 33,000 hectares in size is set aside to preserve the habitat of the finch.
3. The management plan complies with strict regulatory conditions set by the Australian and Queensland Governments.

The Black-throated Finch Management Plan details a range of practical actions to protect the finch, including:



Fences



Pest animal control



Weed control



Fire management



Grazing management practices



Water source locations

The Black-throated Finch Management Plan outlines the requirements Adani Mining must follow:



Mitigate impacts (direct and indirect) of the Carmichael Mine



Ongoing monitoring to check mitigation measures are working



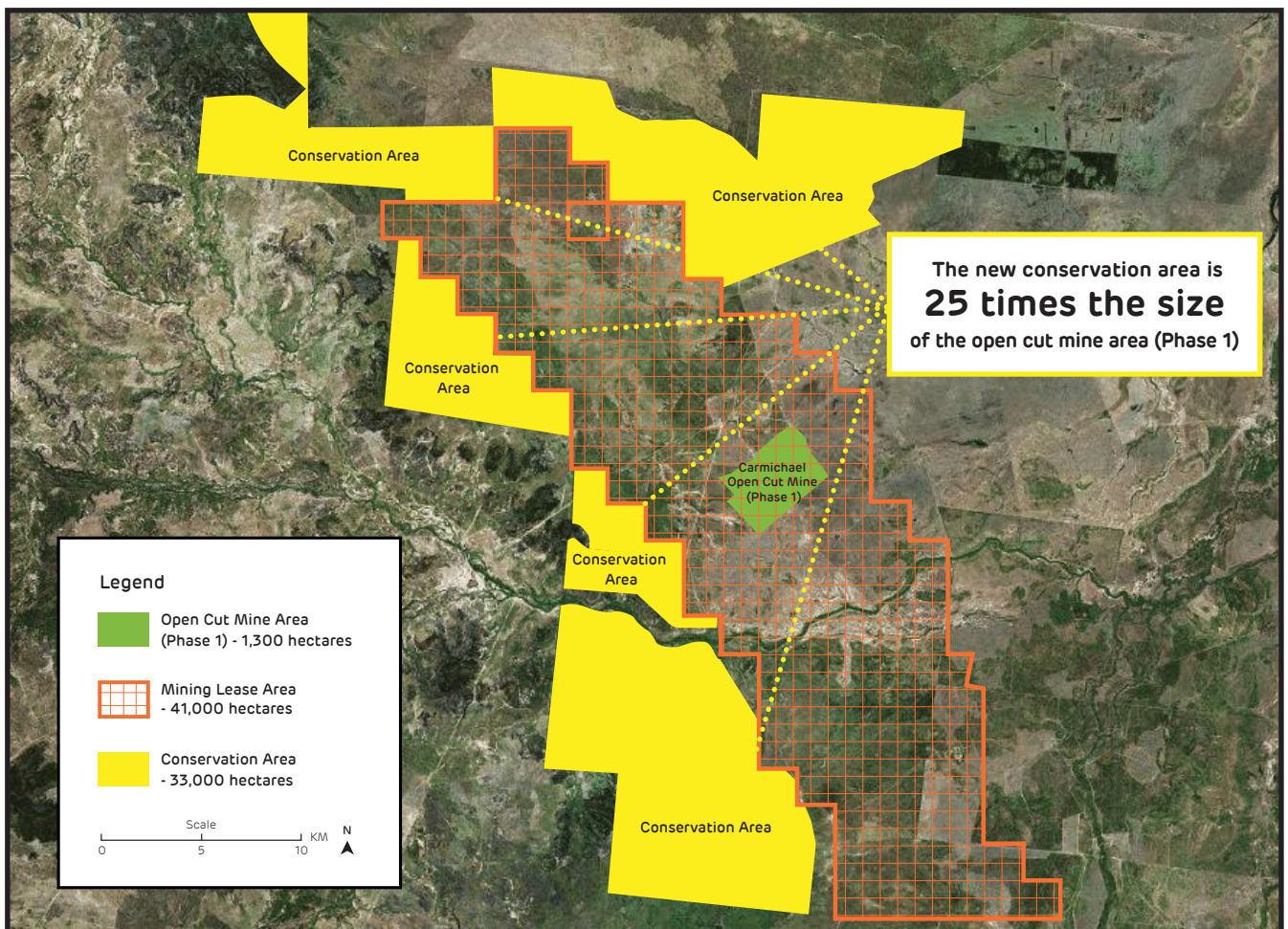
Triggers for different management action and any adjustments to meet goals

Protecting local wildlife

Adani Mining is creating a conservation area at Moray Downs West, the pastoral lease owned by the company, to protect local wildlife like the finch and other important species of reptile, plants and birds.

At more than 33,000 hectares in size, the conservation area will be **bigger than Moreton Island and one of the largest privately managed conservation areas in Queensland. It will also be 25 times the size of the open cut mine area (Phase 1).**

A new conservation area



Indicative map of the open cut mine (Phase 1), mining lease and conservation area boundaries

The conservation area will protect the finches' natural habitat. It is located 5km from the open cut mine and other infrastructure (e.g. roads and tracks).

Key features of the conservation area include:



Medium length native grasses



Variety of seeds



Particular types of trees to build nests



Water puddles, troughs and dams

Protecting the Black-throated Finch

Safe transition to the conservation park

To ensure the finch is protected during construction and operation, clearing will occur gradually to allow the finches to move away from mining activities and towards the conservation area.

The conservation area will be established, managed and protected in parallel with mining activities.

Ecologists and wildlife experts will be engaged to reduce additional harm to wildlife.

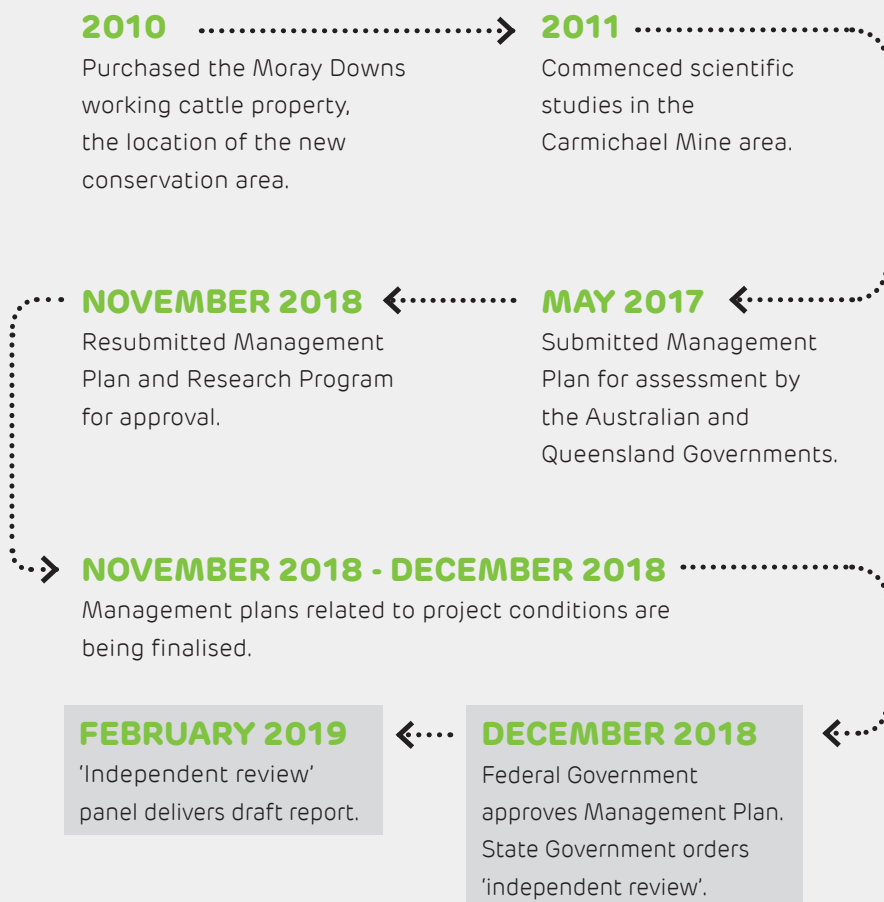


The Black-throated Finch

Black-throated Finch Management Plan timeline

10 DETAILED SURVEYS COMPLETED BETWEEN 2012 AND 2018

WORKED WITH GOVERNMENT BETWEEN 2017 AND 2018 TO FINALISE MANAGEMENT PLAN THROUGH 7 PLAN REVISIONS



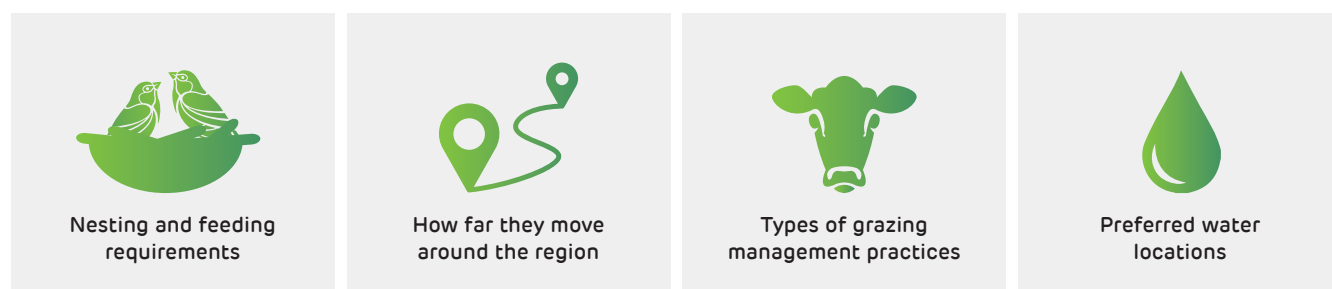
About the scientific and environmental studies

Adani Mining began targeted scientific studies in the Carmichael Mine area in 2012, when the finches were discovered living around cattle on the property. Ecological experts were then engaged to study the finches, one to two times each year between 2012 and 2018.

Ten detailed surveys of the finch have been completed, which informed the Black-throated Finch Management Plan and supporting plans, such as:



Adani Mining has also committed to funding future academic research on the finches and their local habitat. The Black-throated Finch Research Program will help us to specifically gain knowledge on:



Approvals and legislation

Adani Mining is committed to meeting the conditions of the Australian and Queensland Government policies, guidelines, laws and regulations as detailed in the Black-throated Finch Management Plan.

These include:

- *Commonwealth Environment Protection and Biodiversity Conservation Act 1999*
- *Environmental Protection Act 1994*
- *Nature Conservation Act 1992.*

